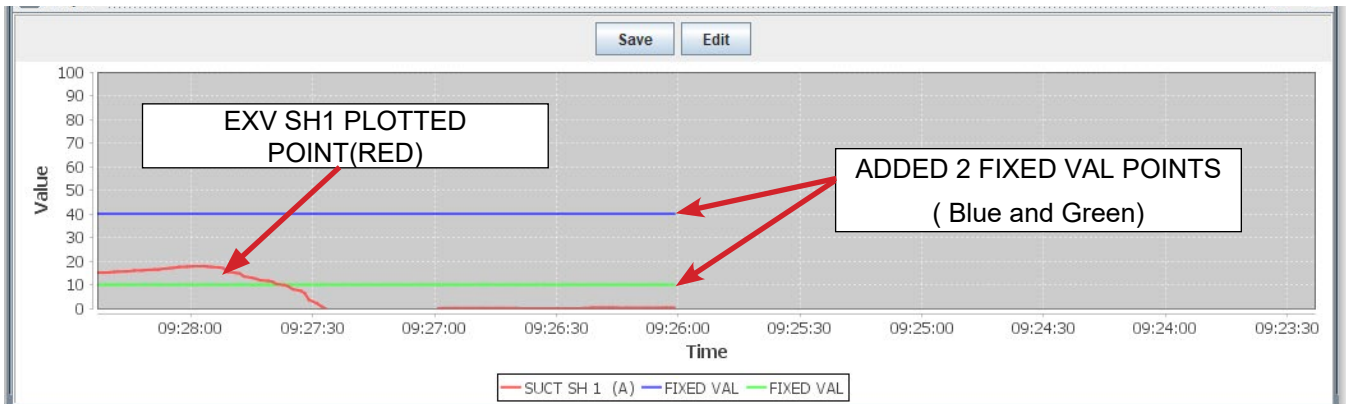




MCS-CONNECT - Version 18.27.10

With the release of MCS-CONNECT Version 18.27.10, the 'Live Graph' section has been upgraded to include the following:

- **GRAPHS - LEFT TO RIGHT READING** - Graphs now move from left to right as shown in screen shot below: This makes it easier when viewing the graph to see changes aligned with the legend on the left.



- **'FIXED VAL'** - When adding a new Live Graph you now can set 'Fixed Val' for setting up you zones for plotting a point. Each new Live Graph can contain 2 fixed values on the graph. These fixed values or lines help in seeing the movement of the plotted point (see above screen shot).

ADDED 2 FIXED VAL POINTS

- **OVERWRITE A SAVED LIVE GRAPH** - Live Graphs now can be overwritten.
- **EDIT and RE-SAVE A LIVE GRAPH** - with this change a technician can now edit a saved Live Graph.
 1. OPEN THE LIVE GRAPH YOU WANT TO EDIT
 2. MAKE CHANGES, CLICK 'SUMMIT'
 3. ONCE THE EDIT IS CORRECT, CLICK SAVE, overwriting the Live Graph or saving as a new graph.

(continued on reverse side)

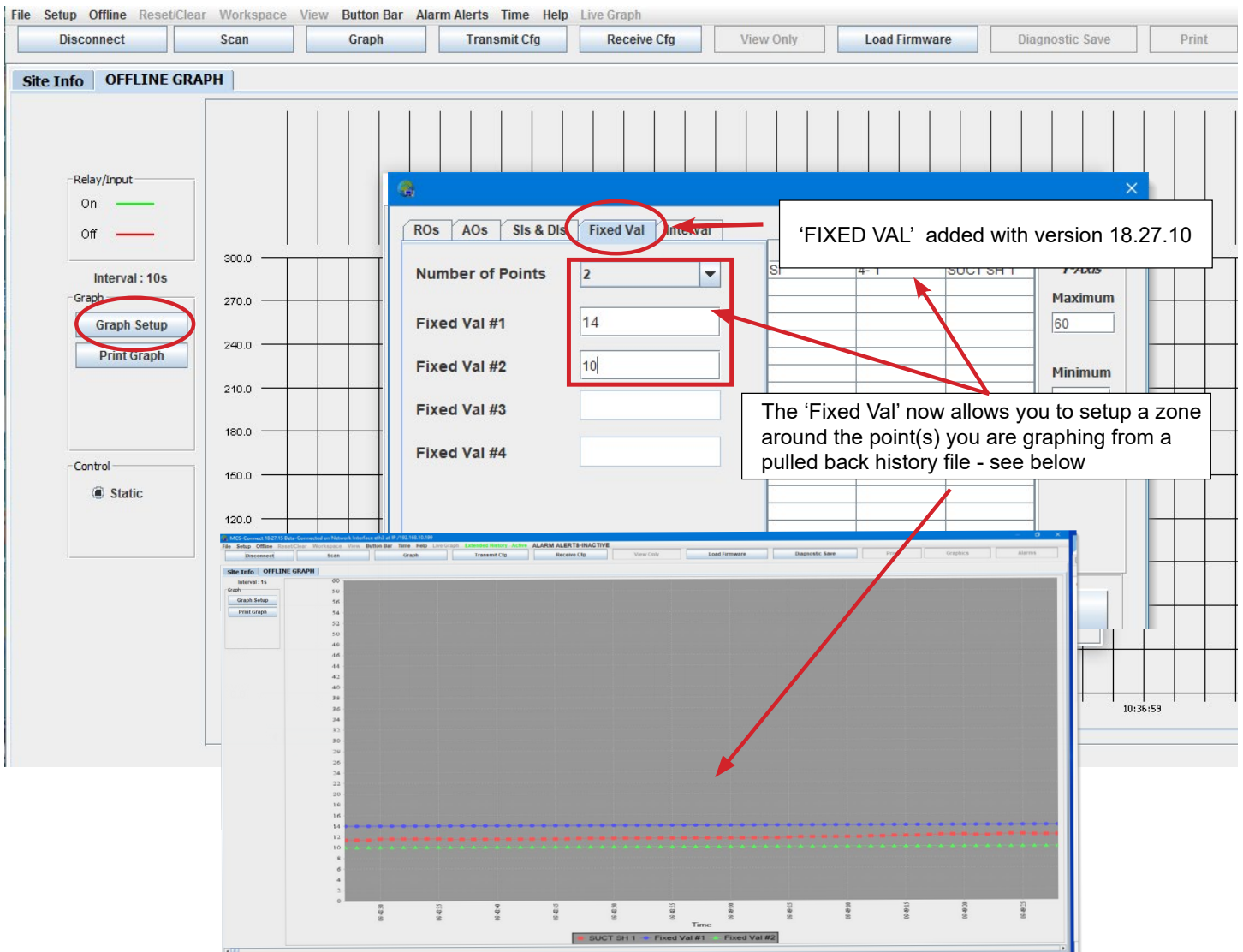
■ GRAPH SETUP CHANGES FOR HISTORY PULLBACK

The MCS controller captures history of the status for all RO, AO and SI points based on the setup of your configuration file.

Prior to MCS-CONNECT Version 18.27.10 the user had to setup additional "USER LOGIC" statements to capture additional internal information for plotting.

With the release of the above version, you are now able to add the fixed points after receiving the pulled back history file along with the points you are plotting.

Having user logic statements added to your config is no longer necessary.



You can set 4 different 'fixed Vals' for setting zones for different graphed points.

UPGRADE YOUR VERSION OF MCS-CONNECT TODAY

Any questions regarding this release, contact sales@mcscontrols.com
Information contained in this document has been prepared by Micro Control Systems, Inc. and is copyright © protected 2016.
Copying or distributing this document is prohibited unless expressly authorized by MCS.

5580 Enterprise Pkwy. Fort Myers, Florida 33905
Office: 239-694-0089 Fax: 239-694-0031
www.mcscontrols.com